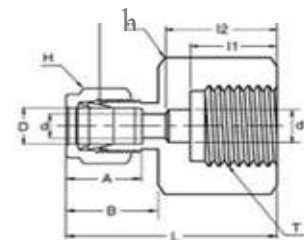


MFGC FEMALE GAUGE CONNECTOR



CONNECTS FRACTIONAL TUBES TO MALE ISO PARALLEL THREAD

Part No.	Tube O.D. D (inch)	T (PF)	d Min	d1	Width Across Flat		A	B	I	I1	I2	L
					h (inch)	H (inch)						
MGC- 4 - 4G	1/4	1/4	4.82	5.58	3/4	9/16	15.24	17.78	30.22	13.00	17.00	37.59
MGC- 4 - 6G	1/4	3/8	4.82	6.60	7/8	9/16	15.24	17.78	30.22	14.20	20.30	37.59
MGC- 4 - 8G	1/4	1/2	4.82	6.60	1-1/16	9/16	15.24	17.78	36.07	18.80	24.90	43.43
MGC- 5 - 4G	5/16	1/4	5.58	-	3/4	5/8	16.25	18.54	30.98	13.00	-	38.35
MGC- 5 - 8G	5/16	1/2	7.11	-	1-1/16	5/8	16.25	18.54	33.53	18.80	-	40.89
MGC- 6 - 4G	3/8	1/4	5.58	-	3/4	11/16	16.76	19.30	31.75	13.00	-	39.12
MGC- 6 - 6G	3/8	3/8	6.60	-	7/8	11/16	16.76	19.30	31.24	14.20	-	38.61
MGC- 6 - 8G	3/8	1/2	7.11	-	1-1/16	11/16	16.76	19.30	34.54	18.80	-	41.91
MGC- 8 - 4G	1/2	1/4	5.58	-	13/16	7/8	22.86	21.84	31.80	13.00	-	41.95
MGC- 8 - 6G	1/2	3/8	6.60	-	7/8	7/8	22.86	21.84	34.29	14.20	-	44.45
MGC- 8 - 8G	1/2	1/2	7.11	7.11	1-1/16	7/8	22.86	21.84	38.10	18.80	-	48.26

CONNECTS METRIC TUBES TO MALE ISO PARALLEL THREAD

Part No.	Tube O.D. D (mm)	T (PF)	d Min	d1	Width Across Flat		A	B	I	I1	I2	L
					h (MM)	H (MM)						
MGC-6M - 4G	6	1/4	4.82	5.58	19	14	15.24	17.78	30.22	13.00	17.00	37.59
MGC-6M - 6G	6	3/8	4.82	6.60	22	14	15.24	17.78	30.22	14.20	20.30	37.59
MGC- 6M - 8G	6	1/2	4.82	6.60	27	14	15.24	17.78	36.07	18.80	24.90	43.43
MGC-8M - 4G	8	1/4	5.58	-	19	25	16.25	18.54	30.98	13.00	-	38.35
MGC-8M - 8G	8	1/2	7.11	-	27	25	16.25	18.54	33.53	18.80	-	40.89
MGC-10M - 4G	10	1/4	5.58	-	19	17.4	16.76	19.30	31.75	13.00	-	39.12
MGC-10M - 6G	10	3/8	6.60	-	22	17.4	16.76	19.30	31.24	14.20	-	38.61
MGC-10M - 8G	10	1/2	7.11	-	27	17.4	16.76	19.30	34.54	18.80	-	41.91
MGC-12M - 4G	12	1/4	5.58	-	22	22	22.86	21.84	31.80	13.00	-	41.95
MGC-12M - 6G	12	3/8	6.60	-	22	22	22.86	21.84	34.29	14.20	-	44.45
MGC-12M - 8G	12	1/2	7.11	7.11	27	22	22.86	21.84	38.10	18.80	-	48.26
MGC-20M-8G	20	1/2	7.0	7.0	32	32	26.0	22.0	44.2	19	-	54.3
MGC-22M-8G	22	1/2	7.0	7.0	32	32	26.0	22.0	44.2	19	-	54.3

MEGALOK VALVES AND FITTINGS INDIA PRIVATE LIMITED

- All dimension are in millimeters unless as specified as 'inch'.
- Dimension are for reference only subject to change
- ISO tapered thread available on request