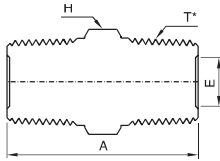


MIHN Hex Nipple

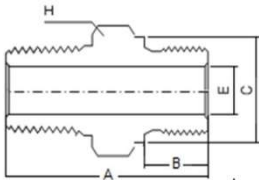


Male NPT Threads

Part Number	NPT Pipe Size	Dimension(mm)			T* ISO/BSP Pipe Size (ISO 7/1)
		A	E	H	
MIHN - 2N	1/8	26.4	4.8	11	1/8
MIHN - 4N	1/4	34.4	7.1	14	1/4
MIHN - 6N	3/8	34.4	9.6	17	3/8
MIHN - 8N	1/2	46.4	11.9	22	1/2
MIHN - 12N	3/4	48.4	15.7	27	3/4
MIHN - 16N	1	65.4	22.4	36	1

MEGALOK VALVES AND FITTINGS INDIA PRIVATE LIMITED

※ **NOTE:** In case of ISO/BSP (ISO 7/1) tapered pipe thread of T*,
The part number should be "NR" instead of "N" Example: MIHN-8NR (ISO TAPER THREAD)
ISO Tapered Threads are available upon request.



Male ISO Parallel Pipe Threads

Part Number	NPT Pipe Size	ISO/BSP Pipe Size (ISO 228)	Dimension(mm)				
			A	B	C	E	H
MIHN - 2NG	1/8	1/8	27.7	7.1	13.7	4.1	14.2
MIHN - 4NG	1/4	1/4	36.8	11.2	18.0	5.8	19.1
MIHN - 6NG	3/8	3/8	37.6	11.2	21.6	7.9	22.2
MIHN - 8NG	1/2	1/2	44.4	14.2	25.9	11.9	26.9
MIHN - 12NG	3/4	3/4	49.0	15.7	32.0	15.7	35.9
MIHN - 16NG	1	1	56.6	18.3	38.9	19.8	41.9

MEGALOK VALVES AND FITTINGS INDIA PRIVATE LIMITED

- All dimension are in millimeters unless as specified as 'inch'.
- Dimension are for reference only subject to change