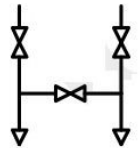


**FLOW DIAGRAM**



**3WAY FLAT TYPE MANIFOLD 1/2" NPT (F) ORDERING PART NO:MLOK/3WFT/MV/8N-6000 PSI-MOC**

No	Spare Parts	SS316	SS304	Monal K 400	Inconal 625	Hastealloy C 276	A 105	Qty
1	BODY	SS316	SS304	Monal400	Inconal 625	Hastealloy C 276	A105	1
2	GLAND BODY	SS316	SS304	Monal400	Inconal 625	Hastealloy C 276	A105	3
3	GLAND RETAINER	SS316	SS304	Monal400	Inconal 625	Hastealloy C 276	A105	3
4	SPINDLE	SS316	SS304	Monal400	Inconal 625	Hastealloy C 276	SS304	3
5	TRIM	SS316	SS304	Monal400	Inconal 625	Hastealloy C 276	SS304	3
6	CHECK NUT	SS316	SS304	Monal400	SS316	SS316	A105	3
7	HANDLE	SS304	SS304	SS316	SS316	SS316	A 105 (GI)	3
8	GLAND SEAL	PTEF	PTEF	PTEF	PTEF	PTEF	PTEF	6
9	DUST CAP	PVC	PVC	PVC	PVC	PVC	PVC	3

MEGALOK VALVES AND FITTINGS INDIA PRIVATE LIMITED

- All dimension are in millimeters unless as specified as 'inch'.
- Dimension are for reference only subject to change